

# THE NEXT CIVIL SOCIETY SUPPORT FACILITY

- DG INTPA G.2

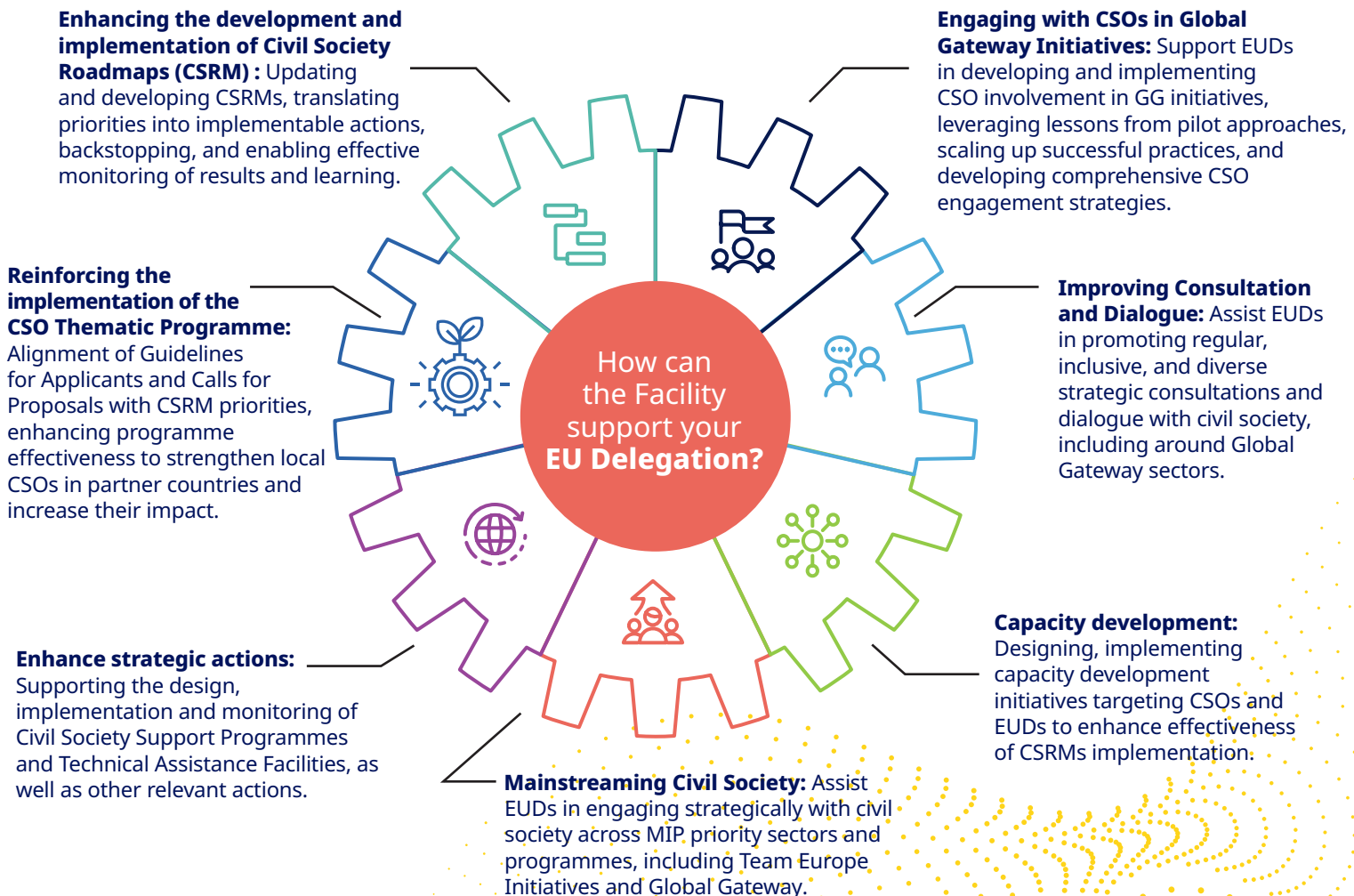
#GLOBALGATEWAY #TEAMEUROPE

APRIL 2025- MARCH 2029

The integration of the recent Civil Society Operational and Roadmap Facilities into a single support Facility offers a unique opportunity to operate and leverage synergies at both policy and operational levels, contributing to develop a more coherent strategy across all available EU instruments, aligned with the global and country level objectives and priorities.

Operating during a strategic transition period towards the final stage of the Multiannual Financial Framework (MFF) 2021-2027 and the launch of the identification and formulation of the new MFF, the next **Civil Society Support Facility** will address immediate operational needs while facilitating a broader transformation of EU-Civil Society engagement. This approach will align with the Global Gateway (GG) strategy and adopt a comprehensive 360-degree perspective, culminating in the new MFF.

By synergising efforts at both policy and operational levels, the Facility will deliver value added, comprehensive technical assistance to EU Delegations and DG INTPA G.2 to enhance effectiveness of Civil Society engagement strategies and approaches, ensuring that they are robust, forward looking, and optimised to amplify the impact of Civil Society partnerships in this new era of global cooperation.



## How to request the support of the Facility?

Support can be delivered in several ways, with two main modalities: Helpdesk, providing remote support and advice; or country support, of strategic nature and involving field missions.

EU Delegations can send a request requiring support from the Facility, to DG INTPA G.2, which will assess the request and link you with the Facility to plan the support.

## Our contacts

The Civil Society Support Facility is managed by NIRAS A/S and implemented by a core team of five experts in addition to a pool of specialised short term experts.

## Civil Society Support Facility Coordinators at INTPA G2

**Iria Folgueira Castro for Civil Society  
Roadmaps and Dialogue**

[Iria.FOLGUEIRA-CASTRO@ec.europa.eu](mailto:Iria.FOLGUEIRA-CASTRO@ec.europa.eu)

**Ana Paula de Almeida Pinto de Oliveira  
for the CSO Thematic Programme**

[Ana.DE-ALMEIDA-PINTO-DE-OLIVEIRA@ec.europa.eu](mailto:Ana.DE-ALMEIDA-PINTO-DE-OLIVEIRA@ec.europa.eu)

## Team leader of the Civil Society Support Facility

**Carlo Merla**

[CAME@niras.com](mailto:CAME@niras.com)

---

**The Facility will provide strategic, specialised, multi-disciplinary Technical Assistance to INTPA G2 and EUDs to enhance EU engagement with Civil Society in partner countries.**

**The Facility's holistic, evidence-based and learning approach will improve both policy and practice, strategies and capacities, and produce relevant knowledge, ultimately leading to more impactful and sustainable EU-Civil Society engagement.**